

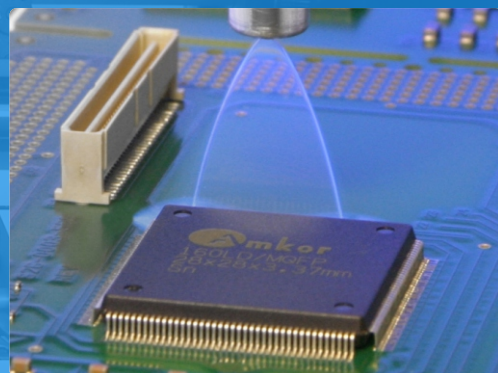
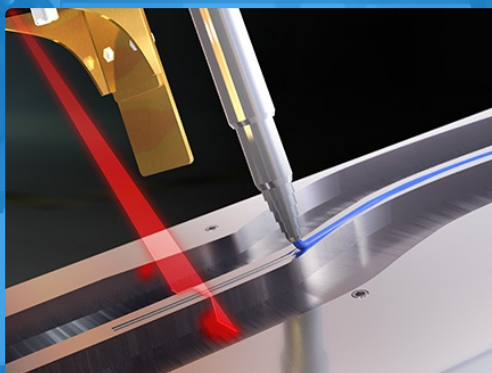
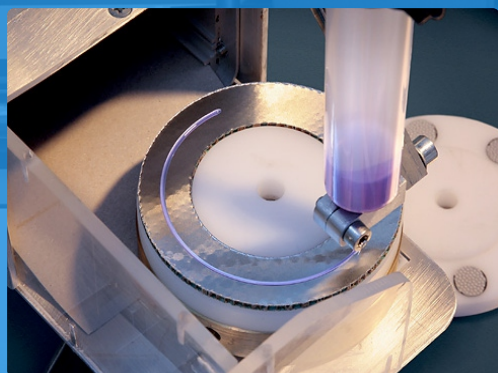


# 涂胶设备

Coating equipment

应用于各种流体喷、涂、点、灌的控制

It is applied to the control of spray, coating, spot and irrigation of various fluids



—做进口设备的替代者—

—Be a substitute for imported equipment—

全国服务热线：400-777-9399

Nationwide service hotline: 400-777-9399



精密小体积圆形点胶机  
Precision small volume circular dispenser



大体积载重型圆形点胶机  
Large volume heavy duty circular dispenser

精密小体积圆形点胶机  
Precision small volume circular dispenser

大体积载重型圆形点胶机  
Large volume heavy duty circular dispenser

产品参数 Product parameters	产品名称 Product name	精密小体积圆形点胶机 Precision small volume circular dispenser
	型号/规格 Model/specification	DD-3
	产品编号 Product number	700500
	重复精度 Repeat accuracy	±0.01mm
	有效载重/旋转半径 Payload/radius of rotation	5kg / R:100mm
	操作方式 Mode of operation	手动/自动模式 Manual/automatic mode
	调节范围 Adjustment range	60*60*100mm
	核心部件 Core components	PLC核心控制主板，步进电机，文本显示编辑器，精密调压器件 PLC core control board, stepper motor, text display editor, precision voltage regulator
	外形尺寸/重量 Dimensions / weight	D400*W200*H360mm , 21kg
	工作参数 Working parameters	电压：220V,3A, 50HZ, 噪音：≤50db Voltage: 220V,3A, 50HZ, noise: ≤50db
	配件说明 Attachment description	步进电机，驱动器（日本品牌），电磁阀，调压阀（台湾YDK） Stepper motor, driver (Japanese brand), solenoid valve, pressure regulating valve (Taiwan YDK)

产品参数 Product parameters	产品名称 Product name	大体积载重型圆形点胶机 Large volume heavy duty circular dispenser
	型号/规格 Model/specification	DA-20
	产品编号 Product number	800650
	重复精度 Repeat accuracy	±0.03mm
	有效载重/旋转半径 Payload/radius of rotation	10kg / R:150mm
	操作方式 Mode of operation	手动/自动模式 Manual/automatic mode
	调节范围 Adjustment range	100*100*80mm
	核心部件 Core components	PLC核心控制主板，步进电机，文本显示编辑器，精密调压器件 PLC core control board, stepper motor, text display editor, precision voltage regulator
	外形尺寸/重量 Dimensions / weight	D480*W380*H560mm , 35kg
	工作参数 Working parameters	电压：220V,3A, 50HZ, 噪音：≤50db Voltage: 220V,3A, 50HZ, noise: ≤50db
	配件说明 Attachment description	步进电机，驱动器（日本品牌），电磁阀，调压阀（台湾YDK） Stepper motor, driver (Japanese brand), solenoid valve, pressure regulating valve (Taiwan YDK)

产品概述：  
Product description

通过马达带动产品的旋转，三维机架调节点胶头定位至指定位置，实现相应轨迹的精密点胶，电机转速，气缸延时，出胶时间，刮胶时间均可以精确设置。操作方便，维护简单。  
The motor drives the rotation of the product, and the three-dimensional frame adjusts the positioning of the dispensing head to the designated position, so as to realize the precise dispensing of the corresponding track, motor speed, cylinder delay, glue delivery time and glue scraping time can all be set accurately. Easy to operate and maintain.

产品应用：  
Applications

各种溶剂、粘接剂、油漆、颜料、化学材料、固体胶等。  
Various solvents, adhesives, paints, pigments, chemical materials, solid glue, etc.

行业应用：  
Industry application

电声器件，电磁电感，光学，LED照明，通讯，电子电器，五金机械等  
Electroacoustic devices, electromagnetic inductance, optics, LED lighting, communications, electronics, hardware machinery, etc.



桌面型二轴机械臂

Tabletop type two-axis mechanical arm

产品概述：  
Product description

椭圆跑道型点胶机采用二维点胶控制系统，自主编写程序，界面简洁，操作简单。根据产品形状（圆、椭圆、跑道）、大小输入产品参数即可完成编程，取代原始手工画胶，更高效，性能优越，工作稳定。

Elliptic runway dispensing machine adopts two - dimensional dispensing control system, independent programming, simple interface, simple operation. According to the product shape (circle, ellipse, track), size input product parameters can complete the programming, replace the original manual painting glue, more efficient, superior performance, stable work.

产品应用：  
Applications

主要应用于单、双组份丙烯酸酯胶、聚氨酯型粘合剂、厌氧胶、UV胶等胶水的控胶点胶。

It is mainly used in controlling and dispensing of single and two-component acrylate adhesive, polyurethane adhesive, anaerobic adhesive and UV adhesive.

行业应用：  
Industry application

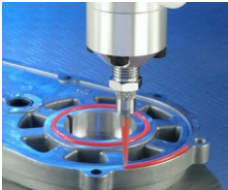
电声行业、电感行业、通讯行业、电子、光学等。  
Electroacoustic industry, inductance industry, communication industry, electronics, optics and so on

产品参数  
Product parameters

产品名称 Product name	桌面型二轴机械臂 Tabletop type two-axis mechanical arm
型号/规格 Model/specification	DC-1000
产品编号 Product number	128950
可搭载 Capable of carrying	针筒、点胶阀....或订制 Needle cylinder, dispensing valve... Or custom
核心部件 The core components	进口步进电机，PLC核心控制主板，中英文液晶显示文本，高精密进口控压器件 Imported stepping motor, PLC core control motherboard, Chinese and English liquid crystal display text, high precision imported voltage control device
信号交互 Signal interaction	ERP/ MES /IO
适用产品规格 Applicable product specifications	≤Φ150mm，高度≤100mm 载重：2kg Φ 150 mm or less, height 100 mm or less load; 2 kg
适用胶水粘度 Applicable glue viscosity	≤150000CPS
电机速度 Motor speed	≤600RPM
重复精度 Repeat accuracy	±0.01mm
时间范围 Time range	0-99.99s
调节方式 Adjust the way	三维精密丝杆调节，文本按键参数设定输入 3 d precision screw adjustment, text key parameter setting input
工作环境 Working environment	电压：AC220V/50HZ/150W 气压：0.4-0.8MPa Voltage: AC220V/50HZ/150W pressure: 0.4-0.8mpa
外形尺寸/重量/运行噪声 Overall dimension/weight/running noise	长*宽*高：490mm*385mm*365mm；重量：21KG 噪声≤60dB Length * width * height: 490mm*385mm*365mm; Weight: 21KG noise ≤60dB



椭圆灯柱点胶  
Elliptic lamp-post dispensing



椭圆金属点胶  
Elliptical metal dispensing



椭圆饰品点胶  
Apply glue to oval ornaments



椭圆喇叭点胶  
Glue the oval horn



椭圆音箱点胶  
Elliptic speaker dispensing



椭圆包装点胶  
Elliptic packaging dispensing



UV胶  
UV glue



红胶  
red glue



环氧树脂  
epoxy resin



颜料  
pigment



硅胶  
silica gel



快干胶  
dry glue



桌面型三轴机械臂系列

Desktop type triaxial robotic arm series

产品概述：
Product description

实现各种不同形状的精密点胶，搬运，检测等技术应用，采用DSP运动控制卡，具有自动仿真，自动图形生成等功能，手持式示教编程器，图形阵列及MAK点对针功能，轻松实现各种图片的编辑及设定，操作简单，维护方便等。

Realize various kinds of precise dispensing, handling, detection and other technical applications, using DSP motion control card, with automatic simulation, automatic graph generation and other functions, handheld teaching programming, graphics array and MAK point needle function, easily realize the editing and setting of various pictures, simple operation, easy maintenance and so on.

产品应用：
Applications

主要应用于各种溶剂、粘胶剂，油漆、润滑脂、锡膏、散螺丝固定剂、环氧树脂，颜料等。

Mainly used in various solvents, adhesives, paints, greases, solder paste, loose screw fixers, epoxy tree fingers, pigments, etc.

行业应用：
Industry application

扬声器点胶，汽车机械零件涂胶，手机按键，手机电池封装，线圈点胶，光学器件加工，塑胶件点胶，PCB点胶，LED点胶，工艺饰品点胶等。

Speaker dispensing, auto parts dispensing, cell phone keys, cell phone battery packaging, coil dispensing, optical processing, plastic parts dispensing, PCB dispensing, LED dispensing, process jewelry dispensing, etc.

产品参数
Product parameters

产品名称 Product name	桌面型三轴机械臂 Desktop rotating four-axis robotic arm			
型号/规格 Model/specification	DG-200	DG-300	DG-400	DG-500
产品编号 Product number	200135	250150	300180	360220
运动行程(mm) Moving distance	200*200*100mm	300*300*100mm	400*400*100mm	500*500*150mm
重复精度 Repeat accuracy	±0.02mm		±0.03mm	
传动方式 Transmission model	日本步进电机+同步带+精密导轨 Japanese stepper motor + synchronous belt + precision guide rail			
部件说明 Component description	DSP运动控制卡，手持式编程器 DSP motion control card, American precision stepper motor, handheld programmer,			
可搭载 Carry	点胶控制器（针筒，点胶阀，卡筒等），电批，CCD检测等 Dispensing controller (syringe, dispensing valve, cartridge, etc), batch, CCD detection, etc			
运行速度 Running speed	X.Y.Z轴：400-650mm/S			
Y轴，Z轴载荷 Y-axis, Z-axis load	Y轴载重：10kg Z轴载重：5kg Y-axis 10kg Z-axis 5kg			
主体结构 The main structure	高强度钣金，电脑锣精密加工钢件 High strength sheet metal, computer gong precision processing of steel parts.			
外形尺寸 Dimensions	380*380*450mm	480*480*500mm	580*580*500mm	680*680*550mm
工作属性 operation attribute	输入电压：220V,电流：≤5A，50HZ. 相对湿度：≤80%. 噪音：≤50db。 input voltage：220V，current：≤5A，50HZ. relative humidity：≤80%.noise：≤50db.			



点/线/弧点胶
Point/line/arc point glue



精准控制
Precision control



不规则点胶
Irregular dispensing



图形智能点胶
Graphic intelligent dispensing



圆形点胶
Circular dispensing



三维点胶
Three-dimensional dispensing



UV胶
UV glue



红胶
red glue



环氧树脂
epoxy resin



热熔胶
hot melt glue



硅胶
silica gel



快干胶
dry glue

## 桌面型三轴机械臂(双平台/旋转轴)

Desktop type (double platform, rotating axis) three axis mechanical arm

JIUJUOK®



桌面型三轴机械臂（双平台）  
Desktop triaxial manipulator (double platform)



桌面型三轴机械臂（旋转轴）  
Desktop three axis mechanical arm (rotation axis)

### 桌面型三轴机械臂（双平台）(DGS-400)

Desktop triaxial manipulator (double platform)(DGS-400)

### 桌面型三轴机械臂（旋转轴）(DGR-300)

Desktop triaxial manipulator (rotating axis) (dgr-300)

#### 产品参数

产品名称 Product name	桌面型三轴机械臂(双平台) Desktop three axis mechanical arm (double platform)
型号/规格 Model/specification	DGS-400
产品编号 Official guidance price	460280
运动行程(mm) Moving distance	400*200*200*100mm(可定制)
重复精度 Repeat accuracy	±0.01mm
传动方式 Transmission model	日本步进电机+同步带+精密导轨 Japanese stepper motor + synchronous belt + precision guide rail
部件说明 Component description	DSP运动控制卡，美国精密步进电机，手持式编程器 DSP motion control card, American precision stepper motor, handheld programmer
可搭载 Carry	点胶控制器（针筒，点胶阀，卡筒等），电批，CCD检测等 Dispensing controller (syringe, dispensing valve, cartridge, etc.), batch, CCD detection, etc
运行速度 Running speed	400-650mm/S
Y轴，Z轴载荷 Y-axis, Z-axis load	Y轴载重：10kg Z轴载重：5kg
外形尺寸 Dimensions	380*380*450mm
工作属性 operation attribute	输入电压：220V,电流：≤5A，50HZ. 相对湿度：≤80%. 噪音：≤50db. input voltage：220V，current：≤5A，50HZ. relative humidity：≤80%.noise：≤50db.

#### 产品参数

产品名称 Product name	桌面型三轴机械臂(旋转轴) Desktop three axis mechanical arm (double platform)
型号/规格 Model/specification	DGR-300
产品编号 Official guidance price	420250
运动行程(mm) Moving distance	300*300*100mm*R260°(可定制)
重复精度 Repeat accuracy	±0.01mm
传动方式 Transmission model	日本步进电机+同步带+精密导轨 Japanese stepper motor + synchronous belt + precision guide rail
部件说明 Component description	DSP运动控制卡，美国精密步进电机，手持式编程器 DSP motion control card, American precision stepper motor, handheld programmer
可搭载 Carry	点胶控制器（针筒，点胶阀，卡筒等），电批，CCD检测等 Dispensing controller (syringe, dispensing valve, cartridge, etc.), batch, CCD detection, etc
运行速度 Running speed	400-650mm/S
Y轴，Z轴载荷 Y-axis, Z-axis load	Y轴载重：10kg Z轴载重：5kg
外形尺寸 Dimensions	480*480*500mm
工作属性 operation attribute	输入电压：220V,电流：≤5A，50HZ. 相对湿度：≤80%. 噪音：≤50db. input voltage：220V，current：≤5A，50HZ. relative humidity：≤80%.noise：≤50db.

### 产品概述：

Product description

实现各种不同形状的精密点胶，搬运，检测等技术应用，采用DSP运动控制卡，具有自动仿真，自动图形生成等功能，手持式示教编程器，不限次数的保存及文件调取，图形阵列及MAK点对点功能，轻松实现各种图片的编辑及设定，原装进口电气配件，精密数控零部件加工，真正实现操作简单，性能稳定的精密多轴点胶设备。

Achieve a variety of different shapes of precision dispensing, handling, testing and other technical applications, using DSP motion control card, with automatic simulation, automatic graphics generation and other functions, handheld teaching programmer, unlimited saves and file retrieval, Graphic array and MAK point-to-needle function, easy to realize the editing and setting of various pictures, original imported electrical parts, precision CNC parts processing, realizing simple multi-axis dispensing equipment with simple operation and stable performance.

### 产品应用：

Applications

主要应用于各种溶剂、粘胶剂，油漆、润滑脂、锡膏、散螺丝固定剂、环氧树脂、颜料等。

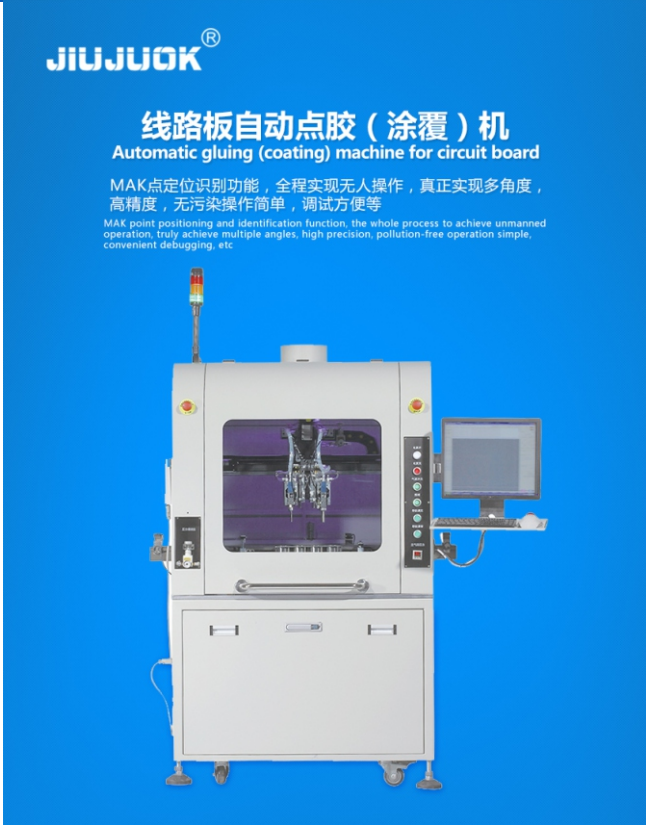
Mainly used in various solvents, adhesives, paints, greases, solder pastes, loose screw fixers, epoxy resins, pigments, etc.

### 行业应用：

Industry application

扬声器点胶，汽车机械零件涂胶，手机按键，手机电池封装，线圈点胶，光学器件加工，塑胶件点胶，PCB点胶，LED点胶，工艺品点胶等。

Speaker dispensing, automotive mechanical parts coating, mobile phone buttons, mobile phone battery packaging, coil dispensing, optical processing, plastic parts dispensing, PCB dispensing, LED dispensing, craft jewelry dispensing, etc.



线路板自动点胶（涂覆）机
Automatic gluing (coating) machine for circuit board

产品概述：
Product description

涂覆机，是专门对流体进行控制并将流体涂覆于产品表面的自动化机械
设备。主要用于产品工艺中的三防漆，UV胶以及其他液体精确喷、涂、点
滴到每个产品精确位置，可以用来实现画线、圆型或弧型。表面涂覆机技术
就是在产品的表面涂覆一种新材料的技术，产品表面喷涂的作用主要表现在
能够起到一个防水，防尘，防静电等。将新材料喷涂到产品表面之后，涂覆
层的化学成分、组织结构可以喝基质材料完全不同，它以满足表面性能、涂
覆层与基质材料的结合强度能适应工况要求、经济性好、环保性好为准则。
表面涂覆的喷涂厚度为几微米，甚至更少。

The coating machine is an automatic mechanical equipment specially for controlling the fluid and coating the fluid on the surface of products. It is mainly used for three anti-paint, UV glue and other liquid to spray, paint and drop to the precise position of each product. It can be used to draw line, circle or arc. Surface coating machine technology is the product of surface coating of a kind of new material technology, product surface spraying effect mainly displays in the layer of chemical composition, the structure of the organization can drink matrix material is completely different, it is to meet the performance, surface coating layer and substrate material of bonding strength can meet the requirements for working conditions and good economical and environmental protection as the criterion. The surface coating is several microns or less thick.

产品应用：
Applications

涂覆机适合PCB集成线路板、汽车电子控制板、电子线路板、航空仪表
板、软性印刷线路板、微电脑控制板、半导体晶体线路保护、家电控制器、
LED等行业涂覆工艺

The coating machine is suitable for PCB integrated circuit board, automobile electronic control board, electronic circuit board, aviation dashboard, flexible printed circuit board, microcomputer control board, semiconductor crystal circuit protection, home appliance controller, LED and other industries

行业应用：
Industry application

LED行业、驱动电源行业、通讯行业、电脑主板、自动化行业、电子、
电焊机行业、汽车电子行业、智能电表行业

Packaging, clothing, mobile phones, electro-acoustic devices, electromagnetic inductors, optics, LED lighting, communication, electronic appliances, hardware machinery, etc.

产品参数
Product parameters

产品名称 Product name	线路板自动点胶（涂覆）机 Automatic gluing (coating) machine for circuit board
型号/规格 Model/specification	N460(N460B)
产品编号 Official guidance price	175120
类型/轴数 Type/number of axes	在线式/三轴X/Y/Z(四轴X/Y/Z/U) On line/three-axis X/Y/Z(four-axis X/Y/Z/U)
U轴旋转角度/U轴驱动 U axis rotation Angle /U axis drive	无 ( ±180° ) /无 ( 伺服马达 ) No ( ±180° ) /no ( servo motor )
典型应用 Typical applications	PCB板旋转性喷涂，IC/电容引脚等（PCB板90°选择性喷涂，90°IC/电容引脚等） PCB board rotating spraying, IC/ capacitor pin, etc. (PCB board 90° selective spraying, 90°IC/ capacitor pin, etc.)
计算机/软件 Computer/software	工控机+运动控制卡，液晶显示器，键盘/Windows7，信诺Coating Industrial PC + motion control card, liquid crystal display, keyboard /Windows7, cigna Coating
编程方式/驱动 Programming mode/driver	鼠键套/伺服马达+滚珠丝杆 Mouse key sleeve/servo motor + ball screw
可倾斜角度 Obliquable Angle	胶阀不可倾斜（可选胶阀倾斜35°）倾斜角度采用直线气缸（可选） Non-tilt rubber valve (optional rubber valve tilt 35°)
定位精度/重复精度 Positioning accuracy/repeat accuracy	±0.02mm
最大移动速度/最大加速度 Maximum moving speed/maximum acceleration	1000m/S ( X,Y,Z ) / 1g ( X,Y)
运输驱动/调宽系统 Transport drive/widening system	步进电机，不锈钢链条/手动（可选自动） Stepper motor, stainless steel chain/manual (auto optional)
调幅速度/运输速度 Amplitude modulation speed/transport speed	250mm/min / 0-2400mm/min
传送方向/最大基板厚度 Transfer direction/maximum substrate thickness	L→R ( R-L可选 ) / 8MM L→R ( r-l optional ) / 8MM
轨道承重（含夹具）/轨道数量 Track load (including fixtures)/track quantity	5.8KG/1条（可选配2条） 5.8kg /1 ( 2 pieces are optional)
点胶区域（W*L）/元件最大高度 Dispensing area (W*L)/ maximum height of element	460X460mm/输送面上100mm下100mm 460X460mm/ 100mm below 100mm on conveying surface
胶阀数量/胶阀类型 Number of rubber valve/type of rubber valve	2 / 针式胶阀、锥形喷胶阀、扇形阀、薄膜喷胶阀（可选配） 2 / needle glue valve, conical glue spraying valve, sector valve, film glue spraying valve (optional)
单次涂覆宽度/涂料容量 Single coating width/coating capacity	2-30mm（根据所选阀而异）/ 10L 2-30mm (depending on selected valve) / 10L
抽风方式/排风要求 Exhaust mode/exhaust requirements	后孔制抽风 / 15m³/min Rear hole pumping / 15m cubed /min
通讯接口/气压 Communication interface/air pressure	SMEMA接口 / 企业0.4-0.6Mpa SMEMA interface/enterprise 0.4-0.6mpa
功率/总功率 Power/total power	电压AC220V,50/60HZ,10A / 2.6KW Voltage AC220V, 50/60hz, 10A / 2.6kw
总重量 The total weight	780KG
外形尺寸（L*W*H） Overall dimension (L*W*H)	1100x1110x1800mm
选选项 Selective item	1：条码扫描；2：低胶量报警装置；3：视觉定位；4：UPS； 1: barcode scanning; 2: low glue volume alarm device; 3. Visual positioning; 4: UPS;



## 手持式双液树脂灌胶机

Hand-held double liquid resin pouring machine

### 产品概述：

Product description

齿轮泵（螺杆泵）灌胶系统是使用不同泵体的一种控胶设备，齿轮泵的概念是很简单的，即它的最基本形式就是两个尺寸相同的齿轮在一个紧密配合的壳体内相互啮合旋转，这个壳体的内部类似“8”字形，两个齿轮装在里面，齿轮的外径及两侧与壳体紧密配合。来自于挤出机的物料在吸入口进入两个齿轮中间，并充满这一空间，随着齿的旋转沿壳体运动，最后在两齿啮合时排出。

Glue wheel pump, screw pump) system is the use of different rubber pump body of a kind of control device, the concept of gear pump is very simple, that it is the most basic form of two of the same size gear in a close coordination of casing gears rotate, the shell's internal similar "8" glyph, two gear is installed inside, outside diameter of the gear on both sides and work closely with shell. The material from the extruder enters between the two gears at the suction inlet, fills the space, moves along the shell with the rotation of the teeth, and finally is discharged when the teeth engage.

### 产品应用：

Applications

双组份（AB）胶水、硅胶、环氧树脂、PU聚氨酯胶水  
All kinds of hot melt strip, granule, plastic, solvent, adhesive, pigment, chemical material, solid adhesive, etc.

### 行业应用：

Industry application

电容，电源，变压器，高压包，点火线圈，安定器，电感线圈，线路板等。

Packaging, clothing, mobile phones, electro-acoustic devices, electromagnet inductors, optics, LED lighting, communication, electronic appliances, hardware machinery, etc

## 产品参数

Product parameters

产品名称 Product name	手持式双液树脂灌胶机 Hot melt dispensing quantity controller
型号/规格 Model/specification	DR-6L
产品编号 Official guidance price	650450
机械臂参数 Arm parameters	行程：X 800*Y 800*Z 150mm.采用龙门结构设计，精密导轨加同步齿轮配精密步进电机控制，手持式编程示教控制器。具有数据保存，MAK校正，远程控制等功能 Trip: X 800*Y 800*Z 150mm. Adopt gantry structure design, precision guide rail and synchronous gear with precision stepper motor control, handheld programming teaching controller. With data saving, MAK correction, remote control and other functions
配比比例 The ratio of the proportion	100：100---100：10 可依要求设定 100:100---100:10 can be set according to requirements
重复精度 Repeat accuracy	出胶精度：±2%。AB比例精度：±2% Gelatinization accuracy: ±2%. Accuracy of AB ratio: ±2%
出胶流量 The plastic flow	移动流量：500mm/S 出胶量:1-20ml/S Mobile flow: 500mm/S glue output :1-20ml/S
胶水粘度 Glue viscosity	500CPS—30000CPS (可通过加热及搅拌降低粘度) 500CPS -- 30000CPS (can reduce viscosity by heating and stirring)
送胶方式 Send glue way	精密螺杆泵（可有颗粒参合物），齿轮泵（不可有参合物），采用步进电机传送 Precision screw pump (can have particle ginseng compound), gear pump (can't have ginseng compound), using stepper motor transmission
混合方式 Mixed way	静态混合（先配混合节数），动态混合（采用电机控制混合管旋转搅拌）。 Static mixing (mixing section number first), dynamic mixing (motor control mixing tube rotation mixing).
控制方式 The control mode	采用PLC控制器，触摸屏液晶文本组合控制。进口脉冲信号驱动控制器控制流量 PLC controller, touch LCD text combination control. The inlet pulse signal drives the controller to control the flow
配件说明 Accessories show	储料搅拌系统（采用不锈钢材质,带加热）。供料系统（采用电机驱动泵辅，精确控制泵辅的旋转速度及角度，实现供料及配比控制）。出胶混合系统（采用双液带搅拌出胶阀精确控制，并带自动清洗功能） Material storage and stirring system (made of stainless steel with heating). Feeding system (motor drive pump auxiliary, precise control of pump auxiliary rotation speed and Angle, to achieve feeding and proportioning control). Glue discharging and mixing system (with double liquid belt glue discharging valve for precise control and automatic cleaning function)
功能说明 Functional specifications	手动与自动控制方式。精确设定出胶比例，出胶流量，加热温度，防固化滴胶，缺料报警等 Manual and automatic control mode. Accurately set the glue ratio, glue flow rate, heating temperature, anti-curing glue drop, material shortage alarm, etc
外形尺寸/重量 Overall dimension/weight	D80*W90*H150mm，重量：80kg D80*W90*H150mm, weight: 80kg
料筒选配(不锈钢) Optional material cylinder (stainless steel)	20L, 30L, 40L, 50L
工作参数 Working parameters	电压：220V 50HZ, 功率：2KW, 工作气压：0.5-0.7kg 噪音：65db Voltage: 220V 50HZ, power: 2KW, working pressure: 0.5-0.7kg noise: 65db



各种溶剂  
arc point glue



粘胶剂  
arc point glue



油漆  
arc point glue



润滑脂  
arc point glue



环氧树脂  
arc point glue



颜料  
arc point glue



Product parameters  
产品参数

Product parameters  
产品参数

Product parameters  
产品参数

产品名称 Product name	精密数显式胶量控制器 Precision digital display glue quantity controller
型号/规格 Model/specification	MX-5000
产品编号 Official guidance price	500300
设定/显示方式 Set/display mode	4位拨码数字延时器/数字显示 4 bit dial code digital delay device/digital display
控制方式 The control mode	时间延时/手动模式,防滴漏回吸功能 Time delay/manual mode, anti-drip and leakage suction function
信号输入 Signal input	吐出输入/吐胶结束输出 Spit input/spit glue end of output
时间范围 Time range	0.00-99.99 s
外形尺寸 Overall dimensions	W188*D198*H76mm
工作属性 Work properties	AC110-220V, 50HZ, 2A,
配件说明 Accessories show	SMC电磁阀,压力阀, 数字压力显示 SMC solenoid valve, pressure valve, digital pressure display
包装说明 Packing specification	纸箱包装, 说明书, 电源线, 针筒器 Carton packing, instruction manual, power cord, syringe

产品名称 Product name	拨码式胶量控制器 Dial code type glue quantity controller
型号/规格 Model/specification	DK-1
产品编号 Official guidance price	150800
设定/显示方式 Set/display mode	4位拨码数字延时器/指示灯 4 bit dial code digital delay device/indicator
控制方式 The control mode	时间延时/手动模式,防滴漏回吸功能 Time delay/manual mode, anti-drip and leakage suction function
信号输入 Signal input	吐出输入/吐胶结束输出 Signal input
时间范围 Time range	0.00-99.99 s
外形尺寸 Overall dimensions	W188*D198*H76mm
工作属性 Work properties	AC110-220V, 50HZ, 2A,
配件说明 Accessories show	YDK电磁阀,压力阀, 指针压力显示 YDK solenoid valve, pressure valve, needle pressure display
包装说明 Packing specification	纸箱包装, 说明书, 电源线, 针筒器 Carton packing, instruction manual, power cord, syringe

产品名称 Product name	蠕动式管状胶量控制器 Peristaltic tubular glue quantity controller
型号/规格 Model/specification	MT-410
产品编号 Official guidance price	280150
设定/显示方式 Set/display mode	4位拨码数字延时器/前延时, 后延时 4 bit dial code digital delay device/front delay, back delay
控制方式 The control mode	时间延时/手动模式,防滴漏回吸功能 Time delay/manual mode, anti-drip and leakage suction function
信号输入 Signal input	吐出输入/吐胶结束输出 Spit input/spit glue end of output
时间范围 Time range	0.00-99.99 s
外形尺寸 Overall dimensions	W188*D198*H76mm
工作属性 Work properties	AC110-220V, 50HZ, 2A,
配件说明 Accessories show	日本步进电机, 驱动控制模块 Japanese stepper motor, drive control module
包装说明 Packing specification	纸箱包装, 说明书, 电源线, 针筒器 Carton packing, instruction manual, power cord, syringe

## 胶量控制器 Glue quantity controller

### 产品概述： Product description

通过设定数字定时器及压力调节阀, 满足精密吐胶定量需求, 配备防液体漏液的真空吸力装置。具有手动与定时两种模式。  
By setting digital timer and pressure regulating valve, it can meet the quantitative demand of precise glue spitting and is equipped with vacuum suction device to prevent liquid leakage. With manual and timing two modes.

### 产品应用： Applications

各种溶剂;油性/水性胶水, 润滑油, 锡膏, 油墨, 颜料, 固定剂等需要点胶控胶的场合。  
Various solvents; Oily/water-based glues, lubricants, solder pastes, inks, pigments, fixers, etc.

### 行业应用： Industry application

电声行业、电感行业、通讯行业、电子、光学等。  
Electroacoustic industry, inductance industry, communication industry, electronics, optics and so on.